



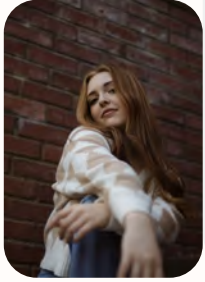
Earth Day Colloquium Spring 2026 Grp. 2

Hirsh Diamant

April 2026



Meet Group 2:



Paige Grace



Jeri Love



Sophia Porter



Irene McAllister



**Jason
Kahananui-Colipano**

Arrived like spring, a new life just begun
Born into the brightness, and a kiss from the sun
These small hands hold the future, the things they will do
Held together by unfamiliar hands, with a bow and some glue
You don't need to understand everything you don't know
It will be much longer before your first snow

To remember the summer and all the things I did find
A joyful dance of her light, warm and kind
Child of the sun, she has asked you to play
When time couldn't catch up, kept winter at bay
Be free and young, present and now
Slow down, watch the sun rise, a promise, a vow

Autumn arrived quietly, from present to future
Letting go of the past, once scraped knees now sutured
New names of who I am whispered through the breeze
Much older now with growing pains, I can feel at ease
As if a leaf fallen from a tree, descending slow and sure
Change can be beautiful, it won't always ask for more
Even when it aches to let go of what's behind
The new colors of today effortlessly intertwined

Winter never asked much of me, my hair began to grey
A rest and reflect, no more dues to pay
Remember and cherish, the new life now fulfilled
Like the tree of life, there's much strength in standing still
The roots that hold me into the ground
The tree is now bare, in snow there's little sound

“The Seasons of Life” by Paige Grace

This poem explores the prompt “What wisdom do you find in Nature and the rhythms of Seasons?”. In this poem, each season represents a stage of life; spring as infancy, summer as childhood, autumn as adulthood, and winter as old age. Throughout the poem there are lessons about growth, change, and rest, that follow the natural cycles of the seasons. The environment is constantly changing, and these changes serve a purpose, much like human life.



This picture also goes with the poem. It represents the four seasons (with colors I associate with each of them), and how they feed into one another. The clock is in the middle representing time and how it moves from season to season.

Within the Elements

Wood moves softly, the liver leads the way,
Guiding what flows when we feel or stay.

Fire flickers in the heart so bright,
Holding our spirit, our calm, our light.

Earth keeps steady, the spleen holds ground,
Digesting the noise when thoughts surround.

Metal breathes through the lungs so deep,
Teaching release, what we hold, what we keep.

Water runs through the kidneys below,
Guarding our strength in a quieter flow.

All of it moving, none of it apart,
The rhythm of life held within the heart.

“Within the
Elements” - Jeri Love



Tulips - Sophia Porter

I painted tulips because I feel like daffodils and tulips are the trumpet blowers of spring. The earth knows her seasons, and her blooms are in sync with her.

I chose purple for their rich and velvety appeal. Also, because the purple tulip means rebirth and new beginnings, they represent springtime, new beginnings, and rejuvenation.

Purple tulips are also symbols of spirituality and calm; they are associated with spiritual awareness and inner peace.



Nature - Sophia Porter

This painting is my interpretation of both nature and human development. Like nature, we grow, we change, we adapt; we blossom, we age, and we are reborn. Nature is perfect, even in a “messy” jungle: overgrown, untouched by man, full of different plants, colors, and shapes. It exists as it’s meant to, and in that, it is perfect. As humans, we can learn from that. We can let things be, allowing growth to happen in its own time, like a child. We can guide and encourage, but like a plant, a child will always continue to grow toward the sun.

Flow of Blue - Sophia Porter

We develop a relationship with the Earth as parents by introducing Her to our children as a friend, an ancestor, a mother, and a provider. We must teach our young that everything is connected and to respect and protect Her.

My painting started as a layered flow of blue. As I continued, it reminded me of an umbilical cord. Then it became like a river, with streams moving in and out of the current. It led me to a deeper thought: how both are flows of life. The umbilical cord carries nutrients from mother to child, a direct line of connection and care. In the same way, the Earth feeds all life. She sustains us, holds us, and keeps us connected through energy and life itself. Everything is connected. We see reflections of human anatomy throughout nature, or maybe we, as humans, are the reflections.





Urban Spring - Irene McAllister

I took this photo to show the way that even though we have laid concrete and created man-made buildings, in the spring we get to see the way spring blooms in urban settings.

This is to show that we continue to create spaces for nature to grow and share space with us as we too evolve and grow.



Nature Looks Back - Irene McAllister

This picture is to demonstrate the way that I feel like nature or the Earth observes us as humans evolving and the way we interact.

This is an Aspen tree, also known as a “watcher tree”



Thank you!